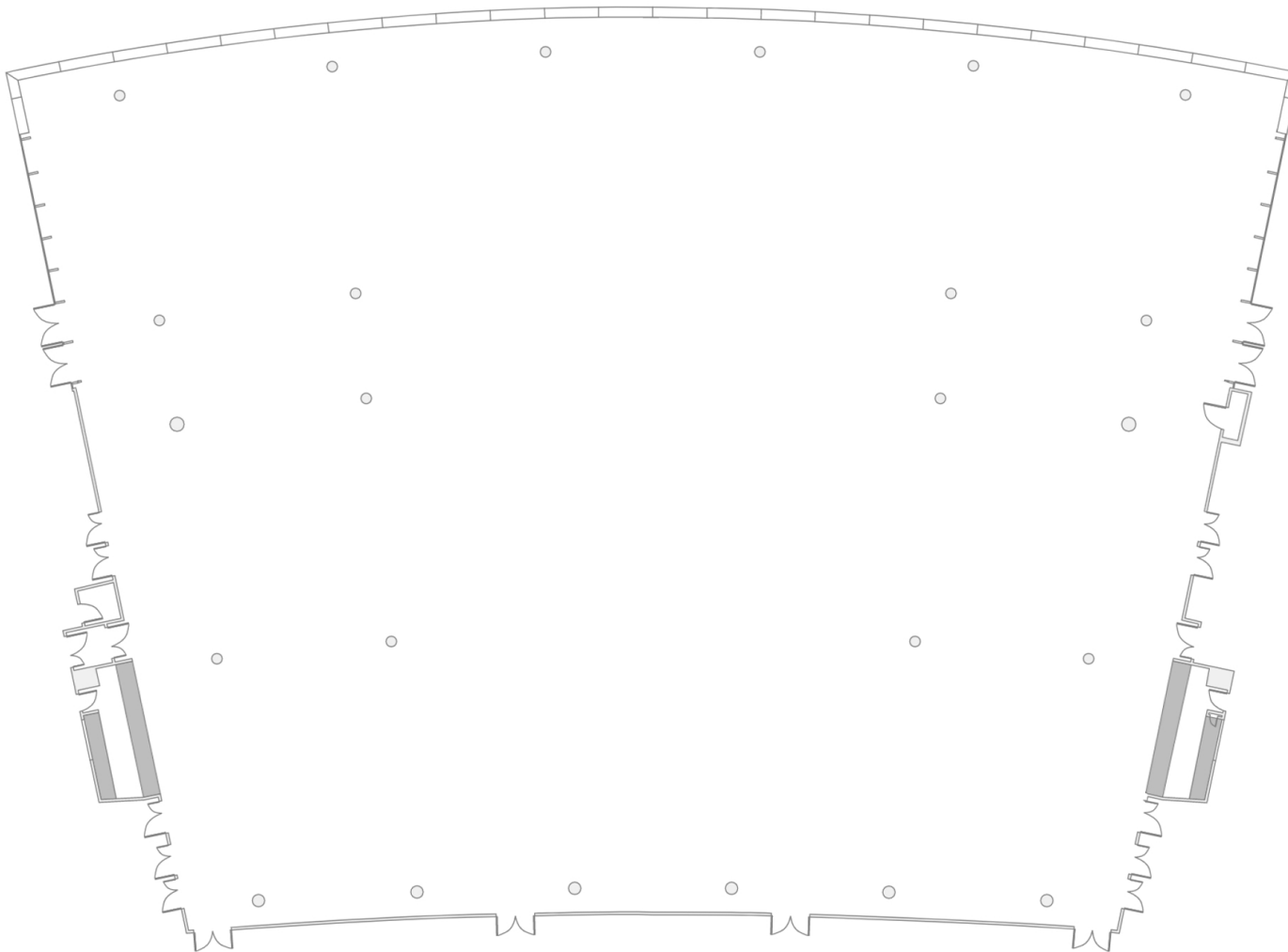


# The Great Hall



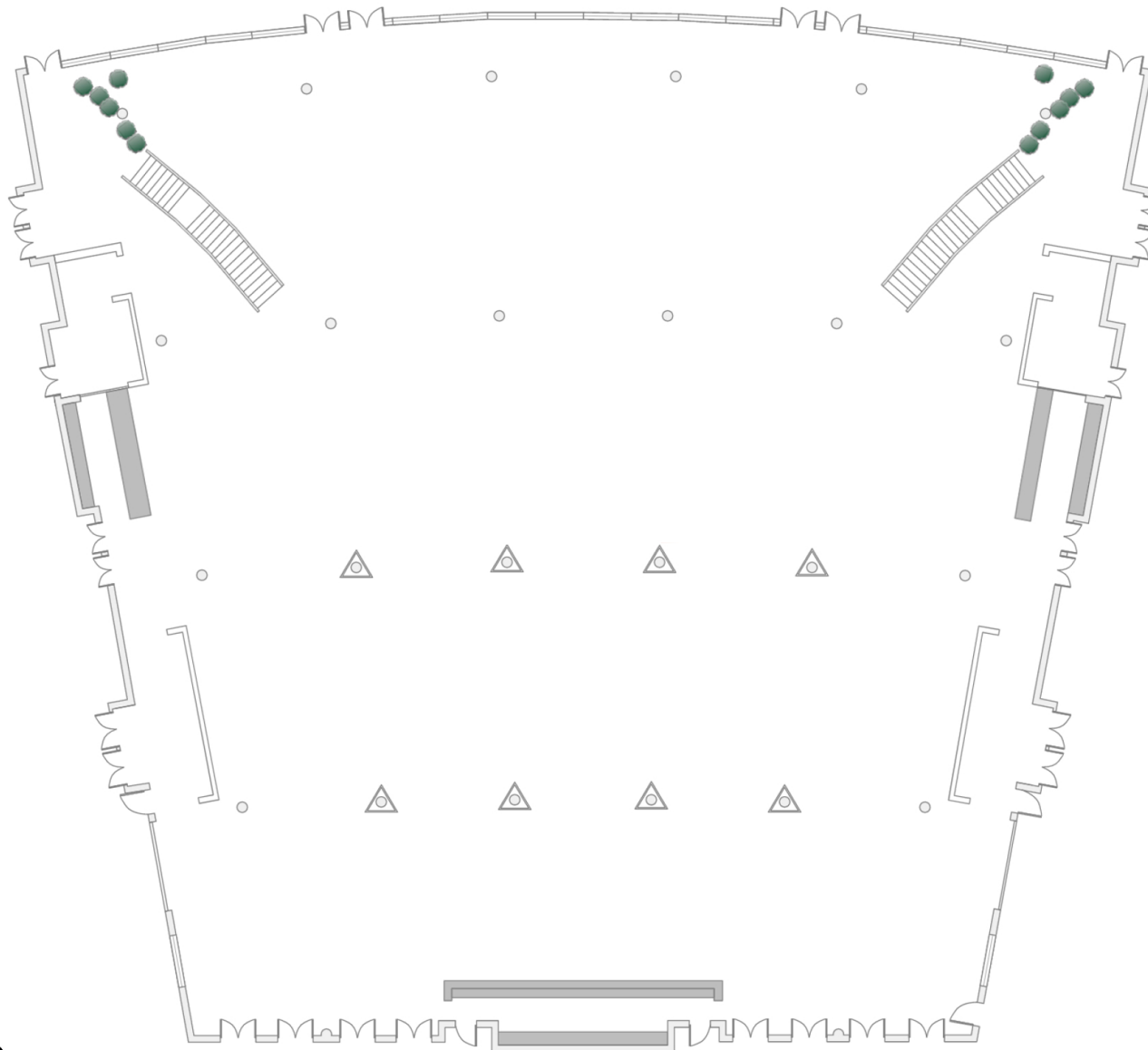
## Capacities

Cabaret	800
Theatre Style	1,800
Dinner	1,090
Reception	2,000
Dinner Dance	1,000
Buffet	2,000

## Dimensions

Height	5.2m
Length	42m
Width	55m
SQ M	2,080m <sup>2</sup>

# The Bobby Moore Room



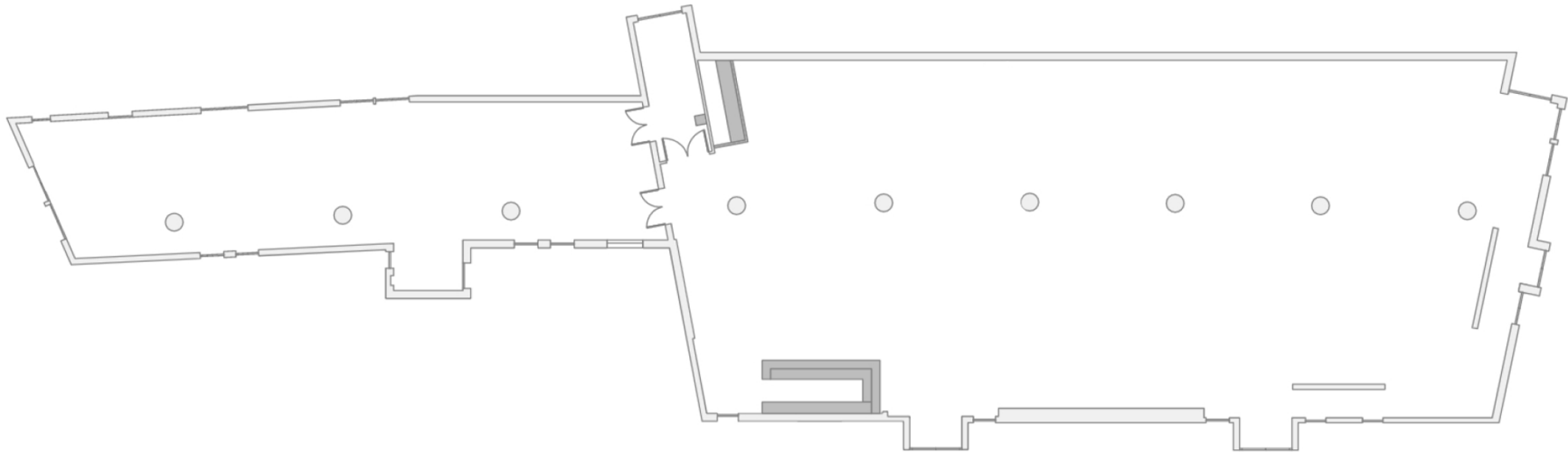
## Capacities

Cabaret	750
Theatre Style	1,050
Dinner	1,100
Reception	2,000
Dinner Dance	900
Buffet	1,000

## Dimensions

Main Height	5.2m
Mezzanine Height	2.4m
Length	30m
Outer Width	55m
Inner Width	37m
SQ M	1,922m <sup>2</sup>

# The Wembley Suite and Reception Room



## Capacities

Cabaret	250
Theatre Style	300
Dinner	300
Reception	450
Dinner Dance	250
Buffet	400

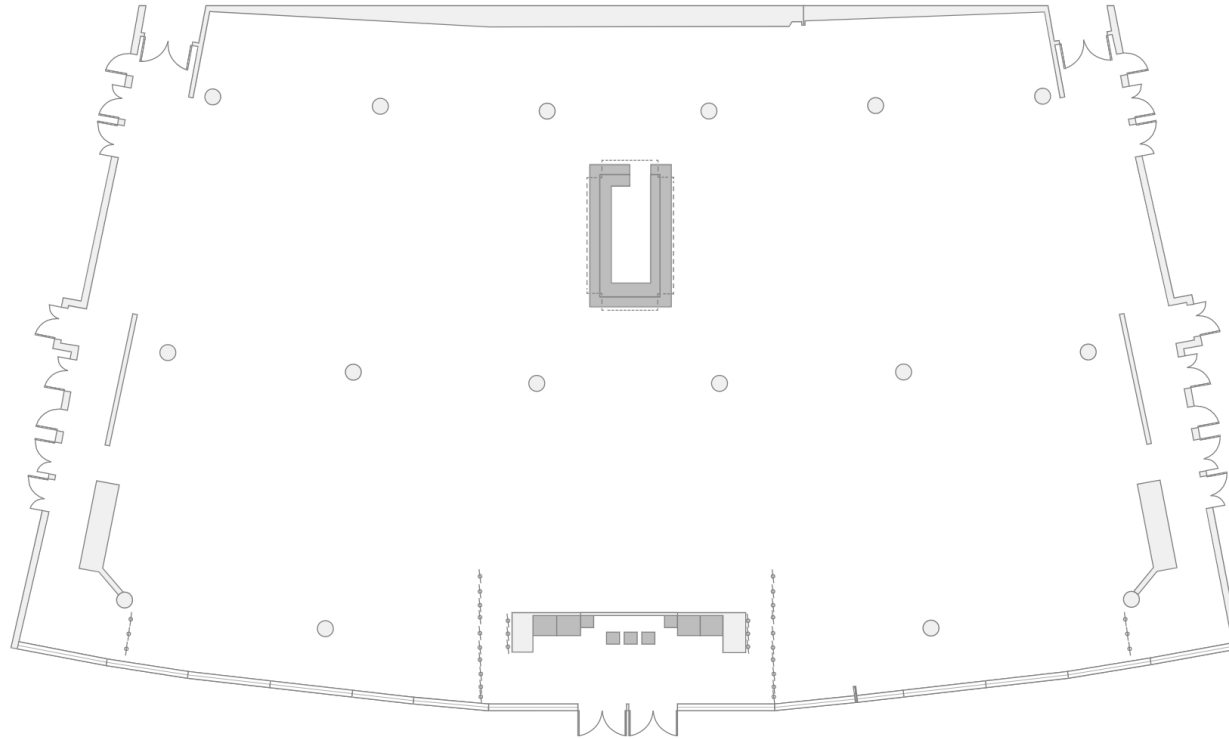
## Dimensions

Height	2.6m
Length	26m / 34m
Width	15m
SQ M	616m <sup>2</sup>

## AV & Supply

13 Amp  
Three Phase  
3 x 55" Screens (Reception Rom)  
5 x 55" Screens (Main Room)  
Video Wall

# The Atrium



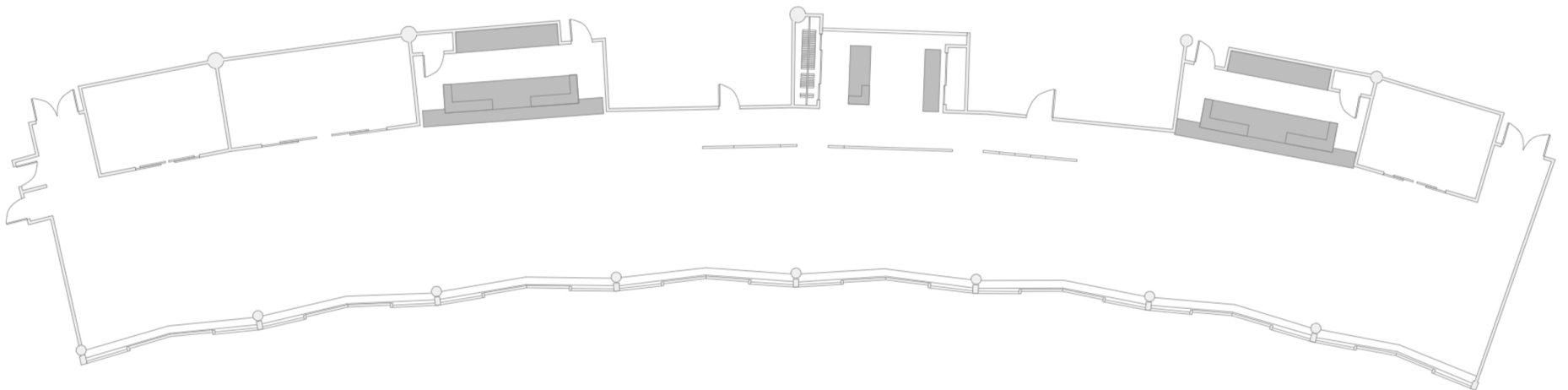
## Capacities

Cabaret	400
Theatre Style	700
Dinner	600
Reception	900
Dinner Dance	550
Buffet	1,300

## Dimensions

Height	3m
Length	30m
Width	37m
SQ M	1,400m <sup>2</sup>

# Pitch View East



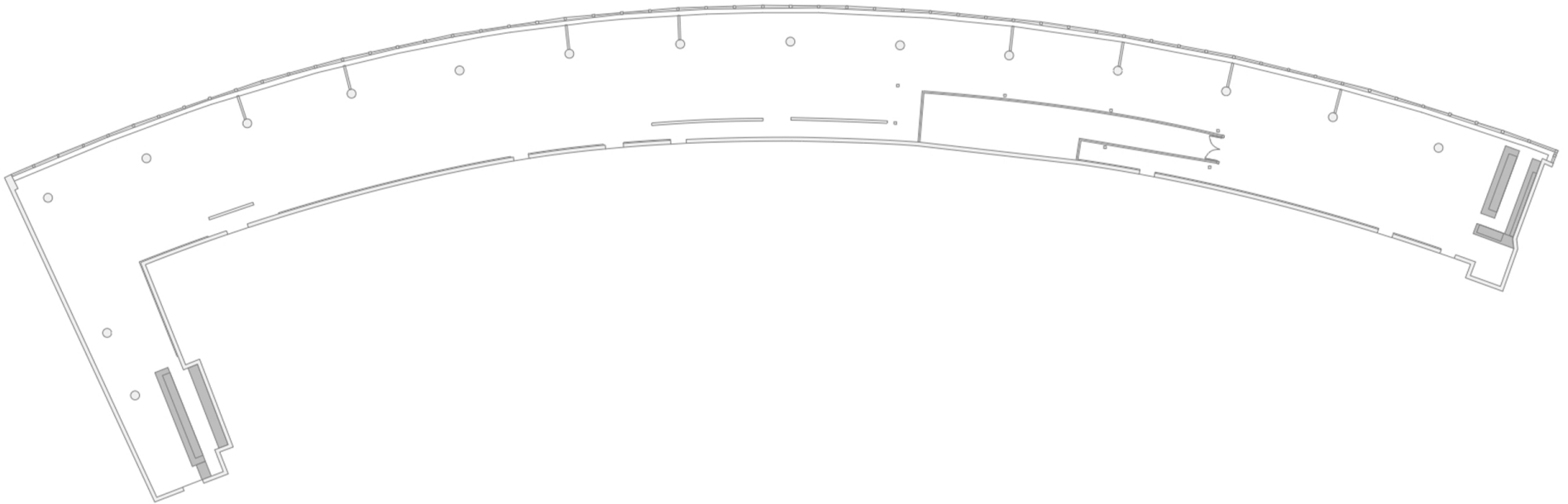
## Capacities

Cabaret	64
Theatre Style	120
Dinner	150
Reception	250
Dinner Dance	100
Buffet	150

## Dimensions

Height	26m
Length	54m
Width	8.5m
SQ M	313m <sup>2</sup>

# The Arc



## Capacities

Cabaret	80
Theatre Style	150
Reception	700
Buffet	400

## Dimensions

Height	2.4m
Length	110m
Width	9m
SQ M	952m <sup>2</sup>