



# **THE WEMBLEY WAY**

HOST YOUR EVENT, CONFERENCE OR MEETING AT  
OVO ARENA, WEMBLEY.



# ***AN ICONIC LONDON VENUE***

OVO Arena Wembley is best known for being an iconic live entertainment venue.

It is London's best-connected arena, with travel links like no other venue in the south of England. Having been at the forefront of the music and live entertainment world for 90 years, this renowned Grade II listed building can also cater for all types of events.

The versatile space can be used as a full auditorium for large scale events, or as a draped short hall for a more intimate setting. We can host events of all sizes. Whether it's a dinner, conference, party or product launch, it's our venue, your vision.





**OUR VENUE, YOUR VISION**





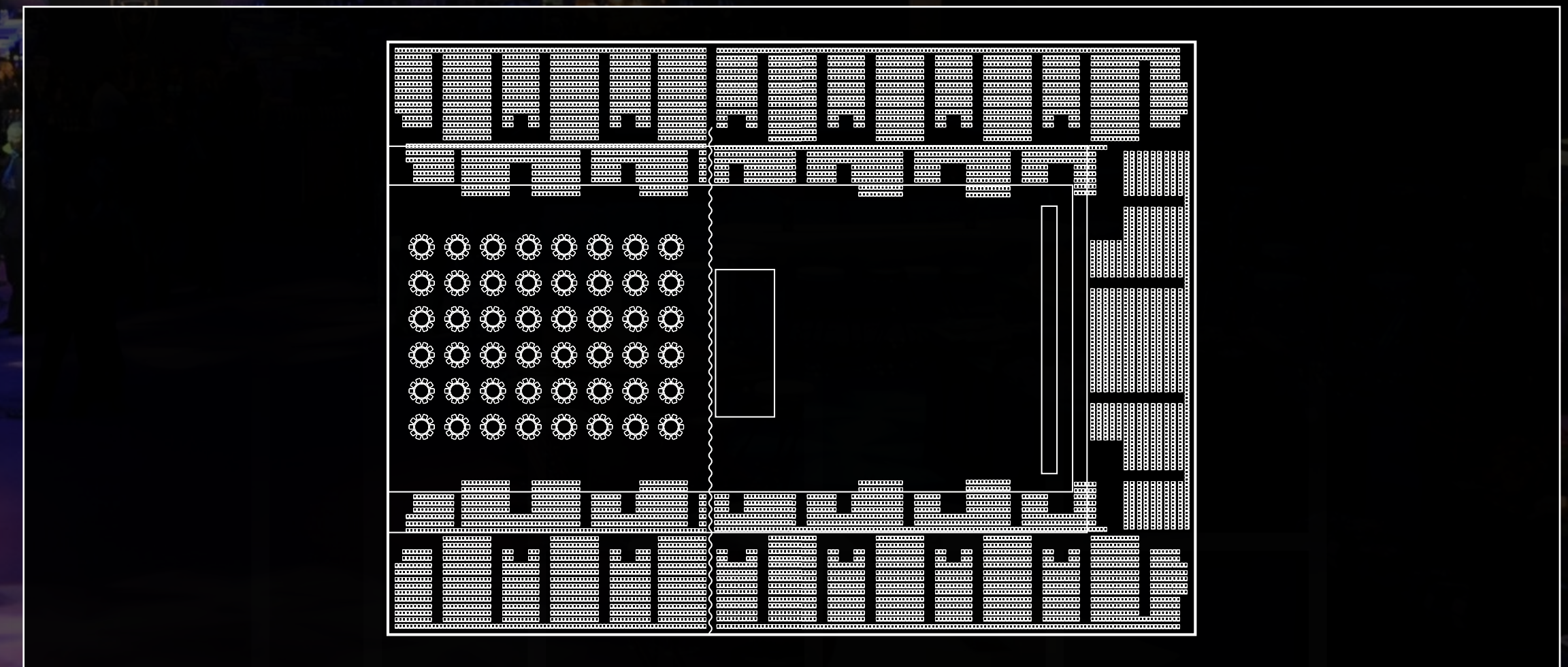
# AUDITORIUM

Built as the Empire Pool in 1934, and now one of the most iconic music venues in London, this well known space offers an incredible blank canvas that can be transformed for a huge range of events.

It is a seated Arena with a 12,500 capacity and boasts 2,655 sqm of uninterrupted floor space in the bowl. This can be adapted for dinners, parties, exhibitions or product launches.

## CAPACITIES:

RECEPTION	5,000
DINNER	1,280
DINNER DANCE	800
THEATRE	3,000
FLOOR SPACE	2,655 SQM



# HELLO WEMBLEY LOUNGE

This is a great breakout space that can be used in conjunction with the arena or separately for smaller events and conferences.

It is equipped with cosy lounge furniture, tables, chairs and a bar. With the added benefit of the natural lighting that shines through, this is the perfect space for any smaller event you'd like to host.

## CAPACITIES:

RECEPTION	200
CABARET	128
DINNER	160
U-SHAPE	40
THEATRE	200
FLOOR SPACE	250 SQM





# HEROES LOUNGE

A popular location and a flexible space, The Heroes Lounge offers a unique setting with windows on to the arena bowl.

This is an intimate space for a luxury drinks reception, unique meeting or a VIP breakout area for a larger event.

## CAPACITIES:

RECEPTION	80
DINNER	50
THEATRE	50
BOARDROOM	20
FLOOR SPACE	30 SQM



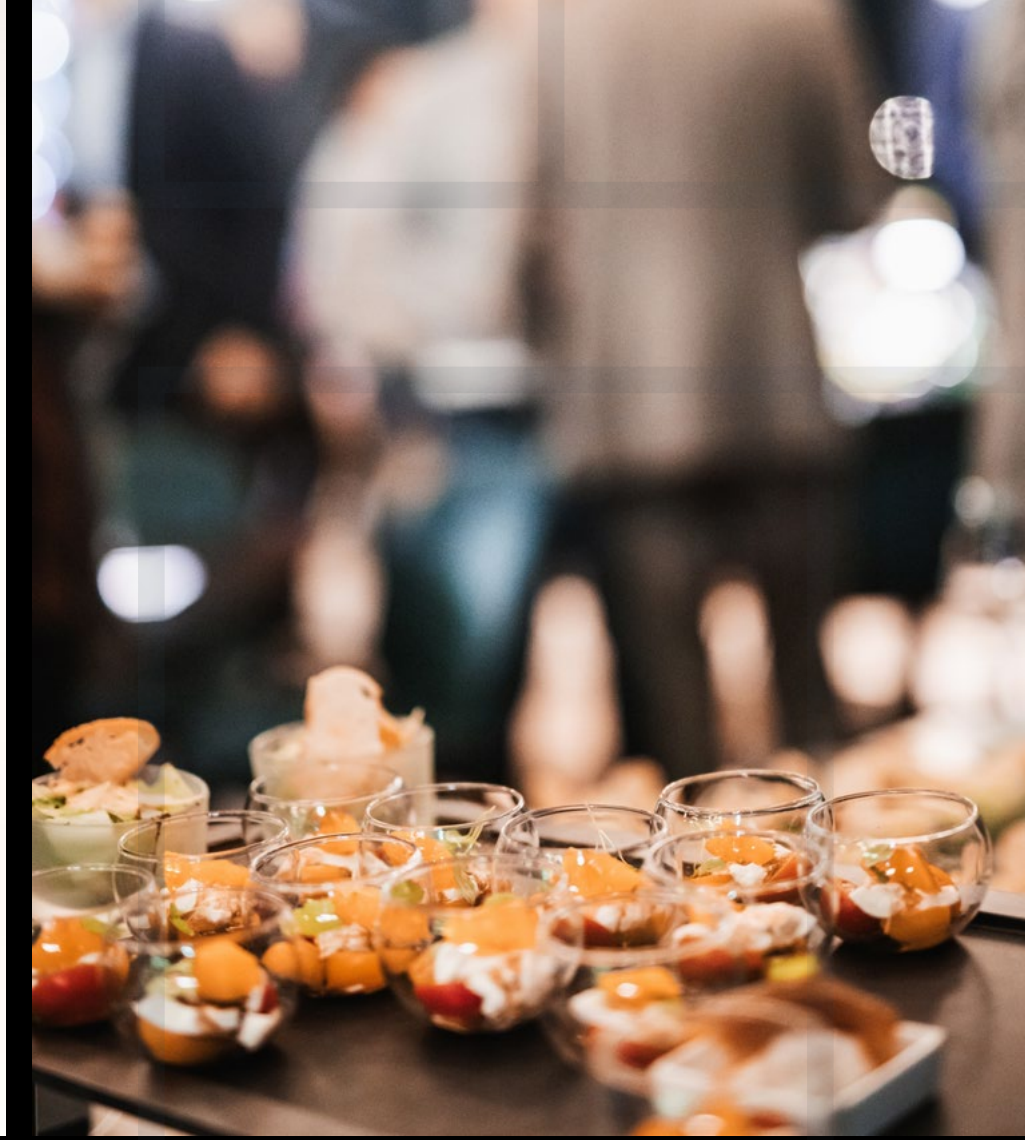


## **FOOD AND BEVERAGE**

We know how important food and beverage is when it comes to conferences, events and private parties. Our Head Chef and his on-site team offer a variety of menus, tailored to suit a range of audiences, budgets and dietary requirements.

The team can support all aspects of the event from breakfast and lunches, to sit-down banquets. We also take pride in sourcing locally and celebrating ingredients from the region.

Prior to your event, we will host a tasting to ensure that the menus exceed your expectations. We can also then make sure the menus are supported by appropriate cutlery, crockery and glassware.



***OUR HIGHLY SKILLED CULINARY TEAM ARE  
READY TO BRING YOUR VISION TO LIFE***







## FOOD FOR THOUGHT

Here is one of our exciting new menus. We take pride in our menus and test them regularly with consumers and event goers.

It's important to note that although this is an example, we would be delighted to develop bespoke food and beverage menus for your special event.

Our team are equally experienced in delivering informal, casual dining menus as well as formal event menus. We also offer a dedicated sommelier and mixologist, who would be delighted to pair the food and drinks menu together.

### BUFFET SELECTOR

Pulled pork sliders, slaw, Sriracha yoghurt

Cuban chicken sliders, crisp lettuce, gherkin

Mini cod and chips, tartar sauce

Toufish and chips, vegan tartar sauce

Asian summer rolls

Cucumber, prawn cocktail cups

Yakatori chicken skewers, sesame, soy and honey dip

Breaded halloumi sticks, tomato salsa

Vegetable spring roll, sweet chilli

Salmon and cod fish cakes, lemon and dill mayonnaise

Sweet potato and quinoa cakes, coriander sauce,  
tomato and red onion salsa

Vegetable samosa, garlic and coriander yoghurt

~

Sugar and cinnamon donut, Belgium chocolate sauce

Brownie bites, white chocolate sauce

Coconut panna cotta, raspberry coulis



# SUSTAINABILITY

We are a part of ASM Global, the world's leading venue management company. ASM Global have launched ASM Global Acts, which has nine specific sustainability goals (shown here) for all of its venue clients.

This means the company is throwing its weight into the environmental movement and first direct arena, Leeds are aiming to achieve Greener Arena accreditation.

We can provide a specific sustainability expert who will access you plans and provide suggestions of how you can lower your carbon footprint, whilst maintaining your event's impact. This service is primarily for large scale events.

We have a plan to reduce energy consumption by **25%** by **2030**

We will divert more than **50%** of our overall waste by **2025**

We will reduce our water consumption by **25%** by **2030**

We will achieve **20%** of all energy consumed through renewable energy sources by **2025**

We will award **50%** of our spend to suppliers adhering to our Environmental Policy by **2030**

We are proud to have increased plant-based menu options by **35%**, this year

We will eliminate single-use plastic in all front of house operations by **2027**

We will decrease food waste by **75%** by **2026** through our Guardians of Grub initiative

We will become **carbon neutral** by **2050**, with a **25%** carbon reduction by **2030**



**LONDON'S MOST COMPLETE  
EVENT DESTINATION**



# WELL CONNECTED

Wembley Arena has its own tube station located a few hundred feet away from the entrance.

Located adjacent to Wembley Stadium and in front of Wembley Way, the arena is easily accessed on foot, in the car or on the train. It's also less than an hour from Heathrow Airport.

**Car:** Multiple car parks on-site with 1,000's of spaces.

**Train:** 4 minute walk from Wembley Park station

**Bus:** 2 minute walk from Fulton Rd. Bus Stop

**Plane:** 45 minute drive to Heathrow Airport





CONNEXIN LIVE, HULL



AO ARENA, MANCHESTER



FIRST DIRECT ARENA, LEEDS



BECKETWELL LIVE, DERBY  
(OPENING 2025)



OVO ARENA WEMBLEY, LONDON



BRIDGEWATER HALL, MANCHESTER

# WELCOME TO THE UK'S MOST EXTENSIVE, WORLD-CLASS EVENT VENUE PORTFOLIO



SOUTHPORT MLEC  
(OPENING 2027)



OLYMPIA, LONDON



YORK BARBICAN, YORK



YORK BARBICAN



THE SAGE, NEWCASTLE GATESHEAD  
(OPENING 2026)



P&J LIVE, ABERDEEN



THE HALLS, WOLVERHAMPTON



UTILITA ARENA, NEWCASTLE

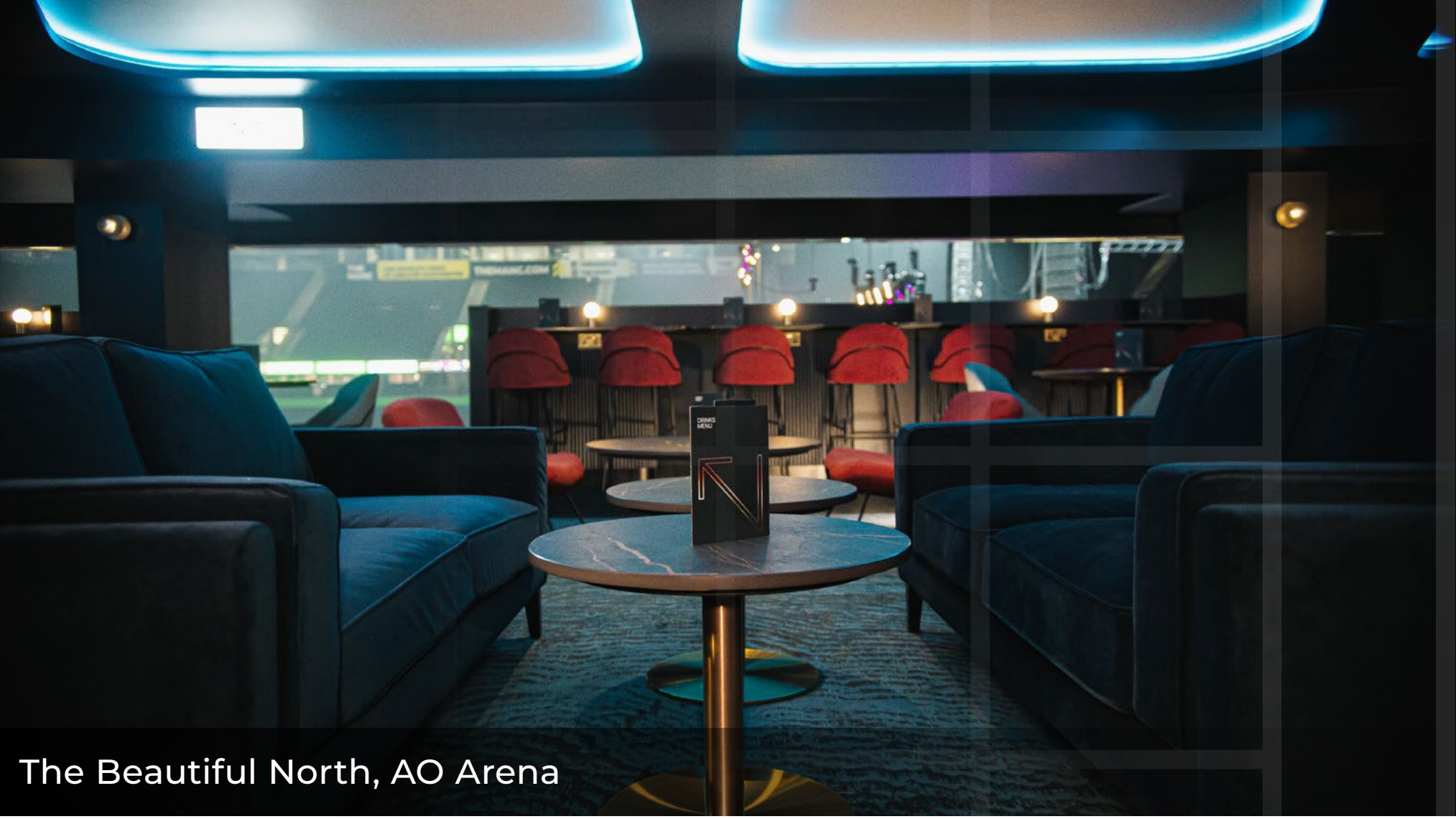
# TAKE YOUR EVENT ON TOUR

As part of ASM Global, it's not just the iconic artists that we work with to tour our venues, we can support hosting your events across the UK too.

From London to Aberdeen and everywhere in between, let our team become an extension to yours and provide event solutions, large or small, across key destinations within our iconic venue portfolio.

If you're looking to take your event internationally, we can help there too. Just get in touch and we'll do the rest.





The Beautiful North, AO Arena



The Black & White Lounge, First Direct Arena



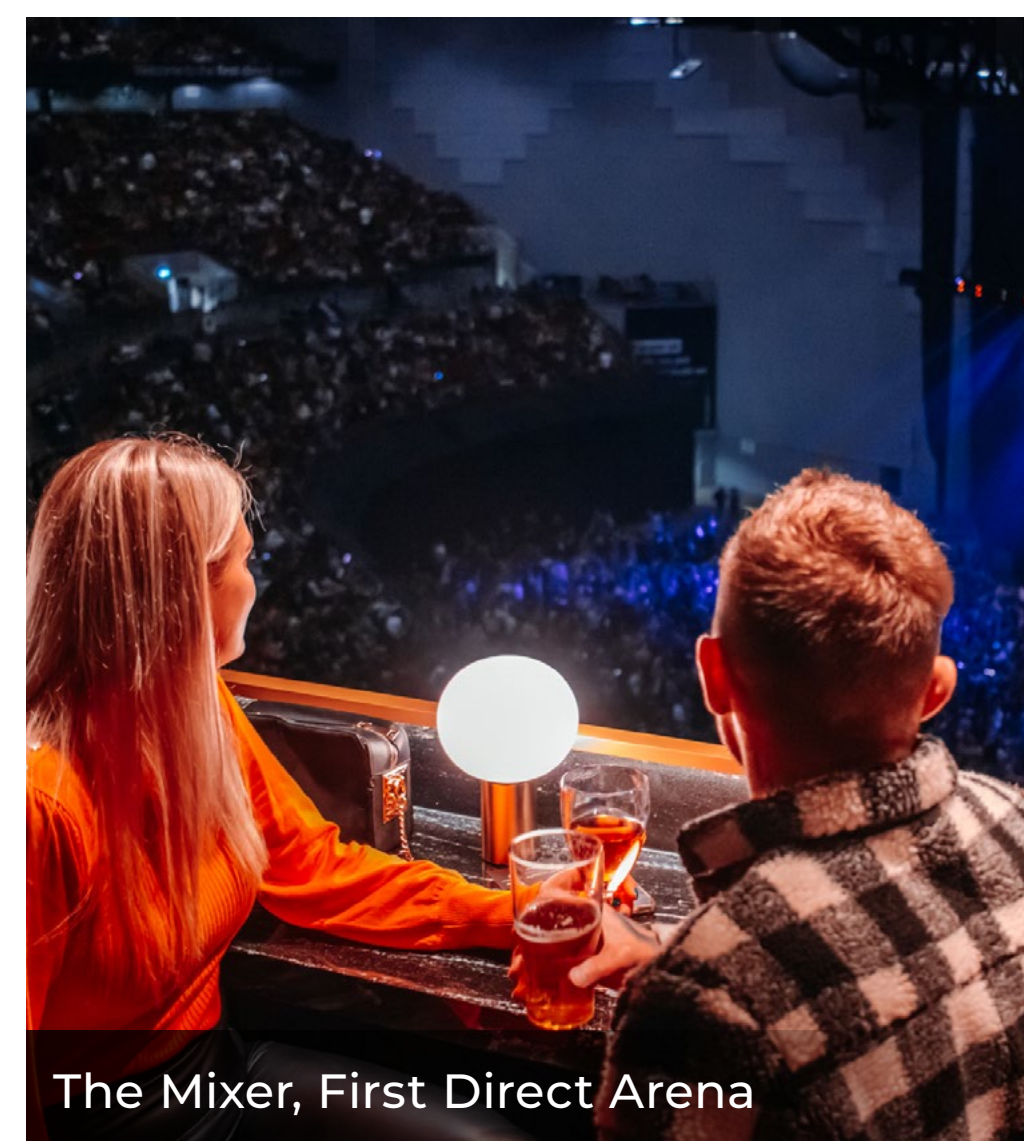
The Mezz Restaurant, AO Arena



The Electric Lounge, AO Arena

***ELEVATING YOUR EVENT***

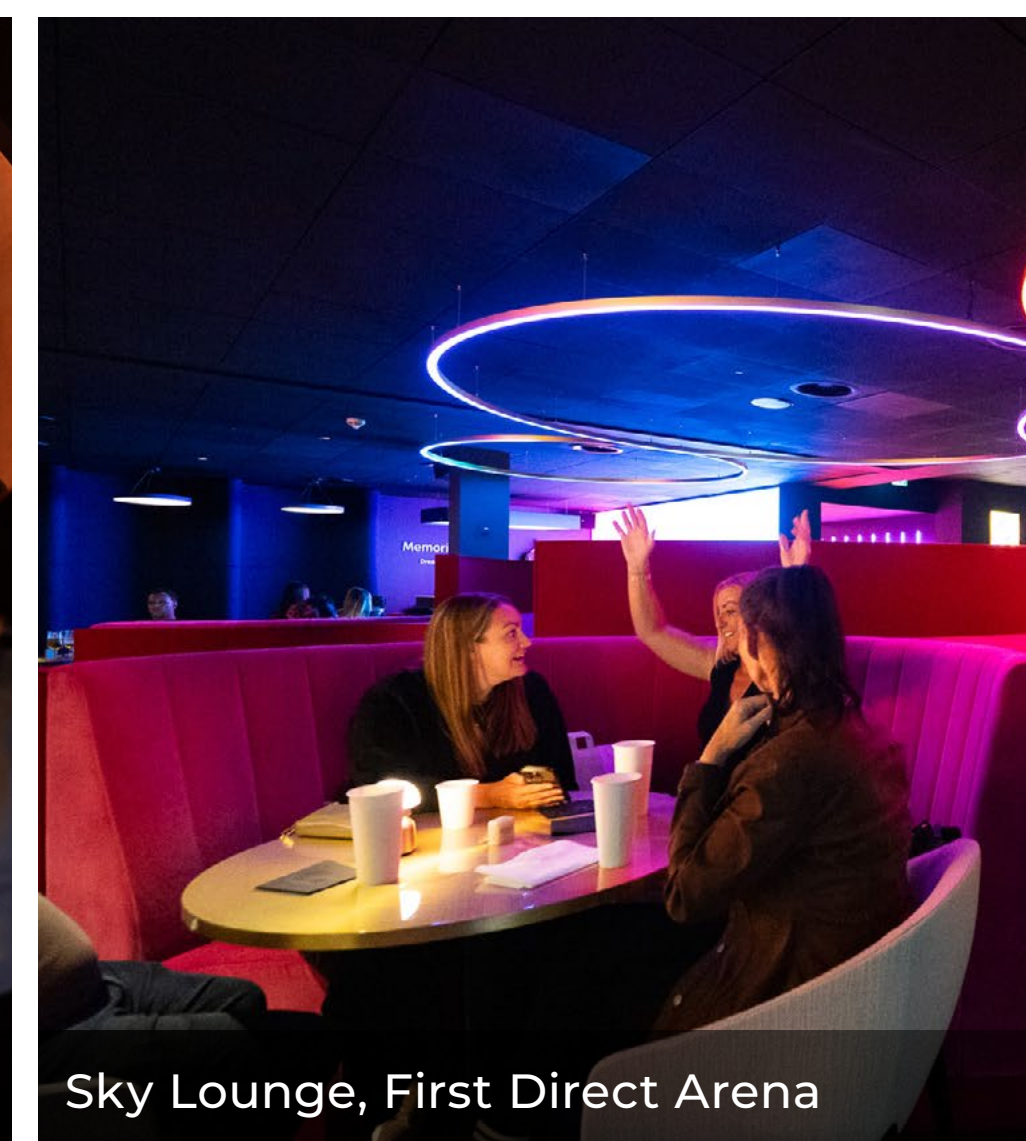
We also provide opportunities to host clients and colleagues on live show days, within one of our stunning premium bars and lounges. Our team can help you achieve your objectives through activations and advertising opportunities.



The Mixer, First Direct Arena



The Mezz Bar, AO Arena



Sky Lounge, First Direct Arena

## **GET IN TOUCH**

We would love to find out more about your event, conference, party or celebration. To tell us more and to find out more, please get in touch with our sales team on any of the contact details shown.

[ovoarena.co.uk](http://ovoarena.co.uk)

### **Zoe Ward**

✉ [Zoe.Ward@eu.asmglobal.com](mailto:Zoe.Ward@eu.asmglobal.com)

☎ 07887 407 266

🌐 [linkedin.com/in/zoe-ward-4042b14](https://www.linkedin.com/in/zoe-ward-4042b14)

### **Katrina Hutchison**

✉ [Katrina.Hutchison@eu.asmglobal.com](mailto:Katrina.Hutchison@eu.asmglobal.com)

☎ 07979 189 388

🌐 [linkedin.com/in/katrina-hutchison-a0941328](https://www.linkedin.com/in/katrina-hutchison-a0941328)



